



# King's Worcester

## Scholarships & Bursaries

---



# Shaped by King's

---



A young woman with brown hair, wearing a dark blue school blazer with red piping and a white shirt, is seated and playing a large wooden cello. She is positioned in the center of a grand, ornate cathedral with high vaulted ceilings, Gothic arches, and a large stained-glass window in the background. The floor is made of dark and light square tiles. The lighting is warm and dramatic, highlighting the architectural details and the musician.

# Contents

---

- 3 Welcome from the Headmaster**
- 5 Awards/Scholarships and Definitions**
- 6 Academic**
- 7 Music**
- 8 Sports**
- 9 All-rounder Award**
- 10 Bursaries**



# Welcome

At King's, we believe that talent, commitment and good character should always be recognised, rewarded and nurtured. In recognition of the all-round education that King's Worcester provides, I'm delighted that we can offer Academic and Music Scholarships and Exhibitions, as well as Awards at 11+ which recognise Sport, Art, Drama and Dance.

Scholarships at King's are held in high regard. Over the years, King's Scholars have contributed significantly to the life of the Foundation; many have gone on to make impressive contributions to society. Scholars are at the heart of the King's community, setting a positive example to the life of the School through their enthusiasm, intellectual curiosity and drive. Academic scholars are encouraged to achieve excellence through a wealth of enrichment opportunities such as national debating forums, national competitions and leadership opportunities, to name a few.

At 13+ All Rounder Awards are for those who are exceptionally talented, yet who fall outside the remit of our Academic and Music Scholarships. These are offered to enthusiastic contributors who will make a difference to the School across a range of disciplines. Our co-curricular provision encourages all pupils to aim high. Art and Drama provide extended opportunities for those performing at the highest level to showcase talent through Internal and External Exhibitions, performing in sell-out Drama productions and taking part in the Trinity College Arts Award programme.

In sport, our enviable Athlete Development Programme supplements the strong coaching, training, and competitive environment that exists at the School by providing a tailored, personal programme for our Sports Scholars.

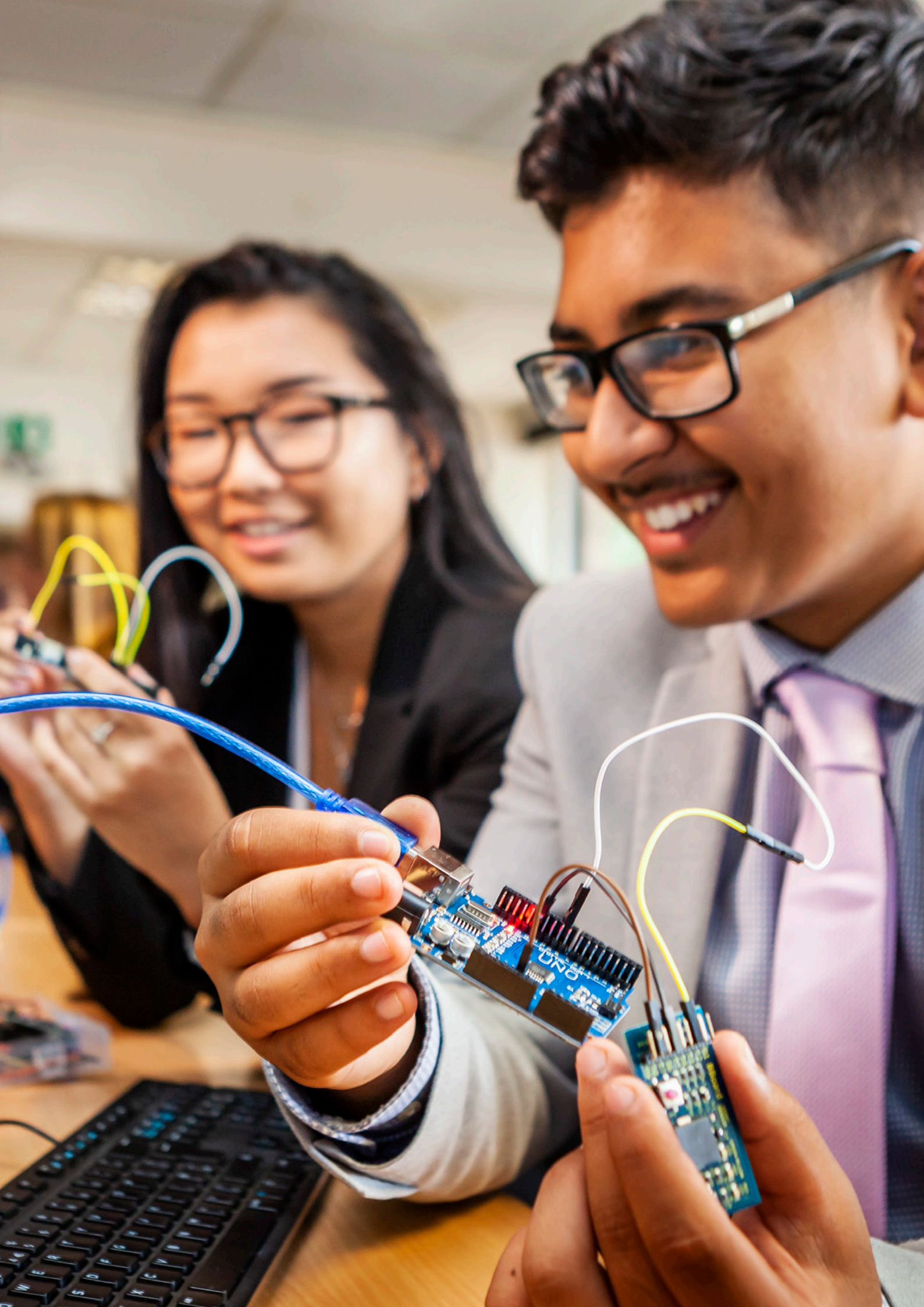
Although they take different forms, our Awards have one aim, and that is to help to nurture and develop pupils' abilities to enable them to fulfil their true potential. All pupils at King's are inspired to learn, are motivated to achieve and are supported to be the very best version of themselves.

If you have any questions about our Scholarships, Awards or Bursaries, please do contact our Registrar ([registrar@ksw.org.uk](mailto:registrar@ksw.org.uk)), who will provide you with more information where required.

## **Gareth Dodes**

Headmaster, The King's School  
CEO The King's School, Worcester Foundation







## Awards/Scholarships Available by Entry Point

<b>11+</b>	<b>Sports Skills Award</b> <b>Academic Scholarship or Exhibition</b> <b>Music Scholarship or Exhibition</b> <b>Art All-rounder Award</b>
<b>13+</b>	<b>Sports Scholarship</b> <b>Academic Scholarship or Exhibition</b> <b>Music Scholarship or Exhibitions</b> <b>All-rounder Award</b>
<b>16+</b>	<b>Sports Scholarship</b> <b>Academic Scholarship or Exhibition</b> <b>Music Scholarship or Exhibitions</b> <b>All-rounder Award</b>

### Definitions

**Scholarship:** A scholarship is a fee remission award for students who show exceptional academic or musical ability. From 13+ upwards those who show talent and dedication in sport.

**Award:** These are fee remission awards for students who show promise in areas outside of academic and music studies.

**Exhibition:** Exhibitions are offered to those who show special promise in one particular subject or for general performance that is sound but are not quite at scholarship standard. These can be fee remissions or the provision of music lessons.

**Bursary:** A means-tested award provided to help families on a lower income support their academically able children (up to 100% of fees).



# Academic

11+	
13+	Academic Scholarships
16+	Academic Exhibitions

## Academic Scholarships

**At King's we recognise and reward outstanding performance through the provision of scholarship awards. King's Scholars are sought-after roles. Those who are awarded scholarships are required to set a positive example to the life of the school through their enthusiasm, commitment, intellectual curiosity and drive.**

The school offers academic scholarships to new entrants at our main joining points of 11+, 13+ and 16+ (Year 7, Year 9 and Year 12).

An academic scholarship is an award made to a child who shows a high level of academic attainment and intellectual curiosity in our entrance examinations.

All candidates sitting an entrance test at 11+, 13+ or 16+ at our main entrance testing are automatically considered for an academic scholarship. (11+ candidates from our Prep Schools should sit the 11+ Entrance tests to be considered).

## Academic Exhibitions

Academic Exhibitions may also be offered to those who show great promise but are not quite at the level of a scholarship. These will be in the form of fee remission.

- Candidates for 13+ and 16+ academic scholarships will be invited to interview prior to awards being made.
- There are no additional, separate exams – those who perform exceptionally well in entrance exams will be considered for a scholarship.



- Scholarships can be awarded up to 25% of fees but are more usually between 5% - 20% fee remission.
- Scholarships can also be supplemented by bursary funding.
- Pupils who are awarded scholarships and exhibitions continue to receive them throughout their time at King's Senior and Sixth Form, subject to continued effort. Performance is reviewed and assessed annually and scholars informed of their progress.

# Music

11+	
13+	Music Scholarships
16+	Music Exhibitions

**Music is a significant part of life at King's and the scope for musical involvement is vast. Historically the music department at King's has long been a centre of excellence and maintains strong links with Worcester Cathedral and the musical life of the city.**

Through an active programme of class music, practical music examinations, co-curricular activities and over twenty concerts a year, the department has supported many pupils who have become professional performers, composers and conductors in both classical and popular music.

Those pupils who have a musical flair and passion could be eligible for music scholarships. There is a wide range of styles and genres of music, including orchestras, wind and jazz bands and solo concerts, allowing pupils to demonstrate and enhance their musical talents. In addition to this, there is access to outstanding music facilities, first class teaching and mentoring from three full time teaching staff and over twenty peripatetic music teachers.



## Music Scholarships

- Those awarded a music scholarship will be expected to play a full part in musical life at the school. The award will be retained as long as the pupil's academic and musical effort are of a high standard.
- Music scholarship assessment takes the form of an instrument or vocal performance of two contrasting pieces of music. If a second instrument is offered (which is by no means mandatory), one piece of music is required for each instrument. It is expected that the candidate will be at the AB/TCL standard below on his or her chosen instrument.

11+ Grade 4

13+ Grade 5

16+ Grade 7 (Grade 5 for the second instrument)

- Music scholarship auditions will be held prior to the main assessments.



## Music Exhibitions

- Exhibitions will be offered in the form of an allowance towards music lessons.



- Scholarships can be awarded up to 25% of fees but are more usually between 5% - 20% fee remission and accompanied by an allowance towards music tuition on the main instrument or voice.
- Scholarships can also be supplemented by bursary funding.
- Pupils who are awarded scholarships and exhibitions continue to receive them throughout their time at King's Senior and Sixth Form, subject to continued effort. Performance is reviewed and assessed annually and scholars informed of their progress.



# Sports

11+	Sports Skills Award
13+	Sports Scholarship
16+	

**King's Worcester is synonymous with sporting excellence and our elite athletes play an important part in ensuring our continued success. Our sporting achievements are extensive, with teams and individual pupils regularly competing both at county and national level. We are proud not only of the fact that our current teams have been invited to play against some of the leading first-class sports schools across the country but also of the achievements of King's sporting Old Vigornians, many of who have completed a national and international level.**

Pupils at King's benefit from a vast range of unrivalled sporting facilities, combined with expert, passionate coaches and mentors. Pupils also have the support of Form and House Tutors to help to ensure that they achieve the right balance between school commitments and sport.

We offer two types of awards that recognise and reward sporting excellence – Sports Skills Award (11+) and Sports Scholarships (13+ and 16+)



## Sports Skills Awards

Our Sports Skills Award recognises the skills, ability and commitment of Year 7 to Year 9 pupils to a specific sport. Pupils will have performed at a high level in two major sports and are likely to have attained representative honours beyond school.

## Sports Scholarships

Sports Scholarships will be awarded to those who demonstrate the ability to progress and achieve high levels of success within their chosen sport. Pupils should already be playing at or have the potential to reach county, regional or national level.

Sports Scholars are talented young men and women who relish the challenge of competing at highest levels of school sport. They are expected to lead by example, both off and on the field, and are required to set high standards in training and matches. Sports Scholars are enrolled on our Athlete Development Programme. Here they have the opportunity to take part in strength and conditioning sessions from our school Strength and Conditioning Coach, as well as mentoring and regular performance meetings.



## Assessments for Sports Skills Awards and Sports Scholarships

- Applications for 11+ Sports Skills Awards are by personal statement and reference provided in January.
- Assessments for 13+ and 16+ Sports Scholarships will be by invitation. Pupils will be invited to a sports assessment morning, which will involve a full programme of activities. They will be assessed in a series of physical activities including fitness, agility and the ability to adapt to specific sporting situations.

- Those who are awarded Sports Skills Awards at 11+ will automatically be considered for Sports Scholarships at 13+.
- Awards in the form of annual sports kit allowances may also be made.
- Scholarships can also be supplemented by bursary funding.
- Pupils who are awarded scholarships and exhibitions continue to receive them throughout their time at King's Senior and Sixth Form, subject to continued effort. Performance is reviewed and assessed annually and scholars informed of their progress.
- Existing pupils (with or without previous Skills Awards) would be assessed at 13+ and 16+ level to be promoted to a scholarship.



# Art All-rounder (11+)

## and All-rounder (13+ and 16+)

11+	Art All-rounder
13+	All-rounder Awards
16+	

We often have pupils who are exceptionally talented yet fall outside the remit of our Academic, Music and Sports Scholarships. We recognise the abilities and potential of these pupils by offering All-rounder Awards. These awards will be made to enthusiastic contributors who will make a difference to the school across a range of disciplines, including drama, dance and art.

- Art All-rounder Award are available at 11+ entry to pupils who show exceptional talent and dedication in the arts and performing arts.
- All-Rounder Awards are available for new entry candidates at 13+ and 16+. These awards provide a remission on fees and are offered at the discretion of the Headmaster.
- We are seeking candidates who have done well in our entrance examinations and have a strong reference from their current school.
- We are looking for those who will make an outstanding contribution to the school community and show strong leadership potential and good, all-round skills.
- Candidates should display a genuine interest, enthusiasm and talent, and work or performances can be submitted in support of an application.
- Independent references must be provided.



# Bursaries

**King's recognises the significant sacrifice that many parents make to enable their children to benefit from an independent school education. We passionately believe that talented children should be able to enjoy all that a King's education can offer, regardless of background or parental income. Our bursaries can amount up to 100% of school fees, and are means-tested. They are specifically targeted towards those applicants who would benefit most from this life-changing opportunity, and many of our most successful pupils are testament to our bursaries' success.**

Entrance Bursaries are awarded primarily to pupils entering the school at the ages of 11, 13 and 16. Depending on the availability of funds, Entrance Bursaries may be awarded to a pupil entering the senior school at other ages. Entrance Bursaries would not usually be available to children entering at a junior school level other than in exceptional circumstances.

## Who decides on the level of bursary awarded?

King's bursaries are decided by a panel who meet to review applications and the level of awards. The members of the panel are from the School leadership team and the bursary.

## Does a bursary last a pupils whole school career?

Bursaries are reassessed annually and, assuming financial circumstances do not change, it is usual for a pupil to receive a bursary from the date of award until they leave.



## Who is eligible?

- We often have high demand for our bursaries and, as such, it is not usually possible to offer funding to all those who apply for a bursary and get offered a place. When distributing the bursary funds, we also take into account pupil performance in entrance examinations.
- The granting of a bursary is discretionary. In making our decisions, we consider a wide range of financial circumstances, including, but not limited to, parental/guardian income (from all sources), assets (including personal property) and other matters that are particular to the pupil such as family circumstances.
- The value of financial support given can be up to 100% of full school fees\*. Grants may also be available to cover or contribute towards the costs of items such as school lunches, uniform, travel costs, examination fees, equipment required for educational, sports or co-curricular activities, foreign exchange and other educationally important activities.
- At King's we treat each application individually and we do not publish a scale of fees payable based on household income.

\*but will be means tested to fit each family and circumstance.

## How to apply

To apply for a bursary form, please contact the registrar on 01905 721742 or [registrar@ksw.org.uk](mailto:registrar@ksw.org.uk). The closing date for bursary applications for the academic year entry is in January prior to testing. Please visit the website [www.ksw.org.uk/bursaries](http://www.ksw.org.uk/bursaries) for specific closing dates.

“ I doubt I would have been able to follow that path if it wasn't for King's and the bursary scheme it provides... It's made such a difference to my path in life. Being able to stay and do well has meant I've been able to go on to Oxford University and to the Royal Academy of Music. ”

Jolyon Loy, Opera Singer

“ Bursaries are important because they allow individuals such as myself who may have the ability to achieve great things but might not have the financial means, to be put into an environment where they will be able to flourish and achieve. ”

Michael Samuleson-Beulah, Cambridge University Student





# Next Steps

---

If you wish to apply for an award, scholarship or exhibition, please return the relevant completed registration form to the registrar, Vickie Peckston. All application forms are available to download at **[www.ksw.org.uk/scholarships](http://www.ksw.org.uk/scholarships)** (internal candidates) or via the **OpenApply portal** (external candidates) from launch date.

## Any questions? Please get in touch.

---

Whether it be a Scholarship, Award or Bursary, we would be very happy to answer any questions you may have and explain how they can help you. Just contact Vickie Peckston **01905 721742** or email **[registrar@ksw.org.uk](mailto:registrar@ksw.org.uk)**, and we'll be glad to help.





**ksw.org.uk**

The King's School  
5 College Green  
Worcester  
WR1 2LL  
t: 01905 721 700  
e: info@ksw.org.uk

The King's School, Worcester: A company limited by guarantee, registered in England.  
Registered office: 5 College Green, Worcester WR1 2LL. Company No: 4776324. Registered charity No: 1098236.  
The information, terms and conditions set out in this prospectus and all occasional papers may be amended from time to time, and their provisions, subject to any such amendments, shall continue to apply for the whole period during which a boy or girl continues to attend the School, irrespective of his or her age.

